

New current sensors for DC and AC applications

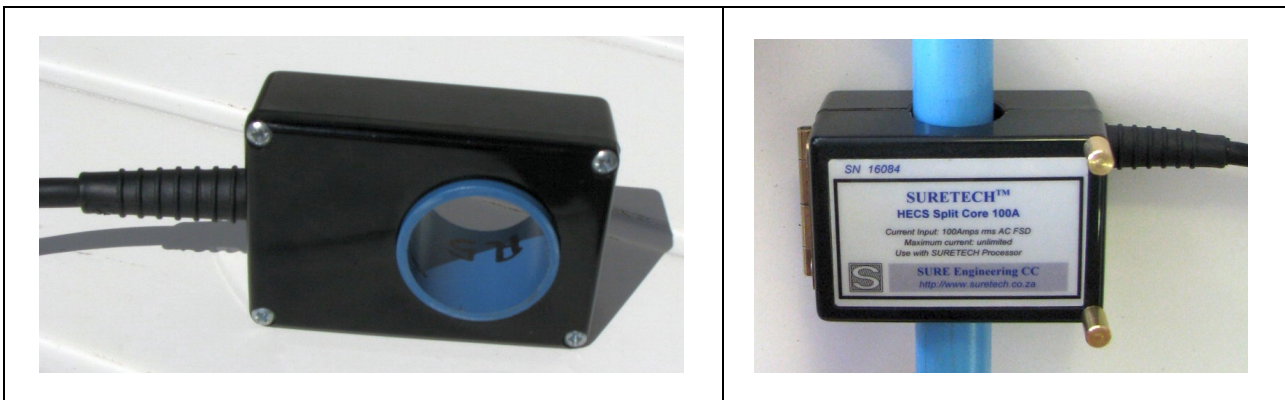
SURETECH™

Hall Effect Current Sensor

HECS AAA FF

General:

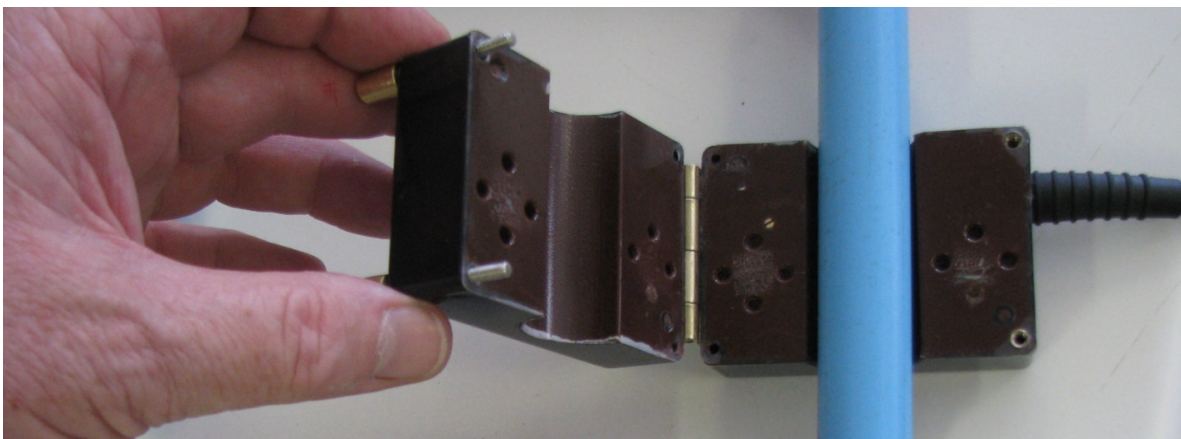
The **SURETECH HECS** (Hall Effect Current Sensor) measures DC or AC current on bus bars, switchgear, cables etc. SURETECH HECS can be specified to measure a wide range of currents, from less than an amp up to tens of thousands of amps. The bandwidth characteristics of the SURETECH HECS are superior to normal magnetic core CT technology, and so can be deployed on Quality Of Supply applications as well. SURETECH HECS can provide a range of outputs such as 0-5V, 0-10V, +/- 10V, 0-20mA, 4-20mA, true rms, instantaneous, relay contacts, LCD display, RS232, RS485 etc. SURETECH HECS can optionally be fitted with signal processing options for a wide range of smart applications, including controllers. The AAA and FF above represent AAA= Current, and FF = Format



Technology:

The SURETECH HECS uses the Hall effect to sense a magnetic field resulting from electric current. Hall-Effect sensor measures the magnetic field within a GOSS core (Grain Oriented Silicon Steel). Input and output current has galvanic isolation. In the event of fault conditions, the magnetic core saturates but does not damage the sensor. HECS sensors are hermetically sealed and encapsulated in resin for improved stability and durability.

Fixed core HECS100SB (24mm ID):



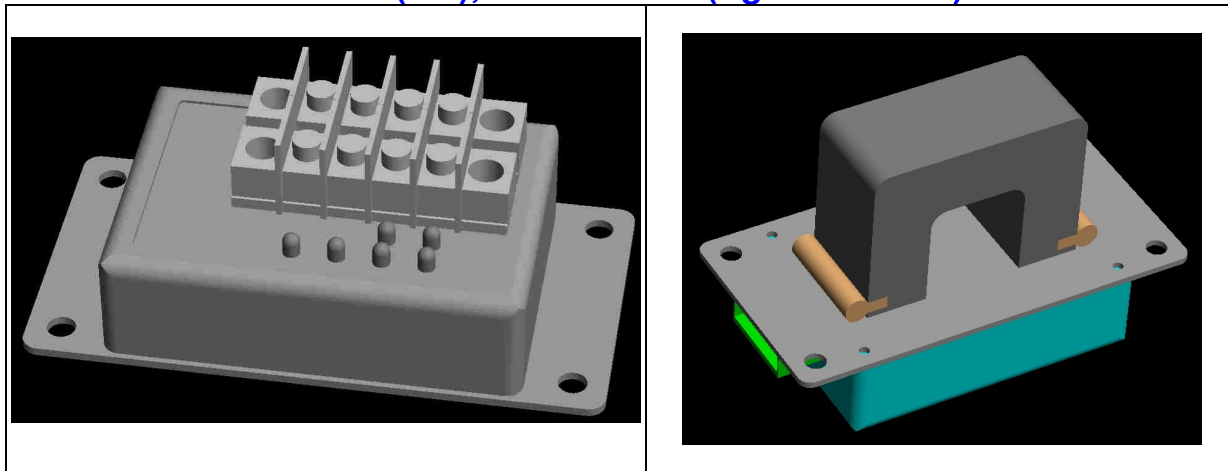
General Features and applications for HECS transducers:

- ✓ Linear measurement circuits
- ✓ Optional LCD readout available
- ✓ Wide selection of input and output options including, logic, analogue, RS232 and human
- ✓ Noise filtering available
- ✓ Dimensions and configuration: User can specify
- ✓ Wide selection of auxiliary power supply options available
- ✓ Galvanic isolation from HV source (optional)
- ✓ Engineering backup to provide you support for design, applications information, installation & calibration, maintenance
- ✓ Motor drive current sampling
- ✓ HV and LV Laboratory and Test system instrumentation
- ✓ HV and LV panel current measurements
- ✓ HV and LV current alarms (upper & lower thresholds settable)

Specification HECS100SB:

<i>Parameter</i>	<i>Value</i>
Type	Hall Effect – Split or Fixed core GOSS
Material type	Precision poly-carbonate enclosure, ultra robust, with PU resin for encapsulation
Mounting	Either directly on bus-bar, or panel mount
Aperture window for input	24mm internal diameter
Input current	+/- 100A DC or AC (user can specify calibration req'd)
Output current	+/- 4-20mA or +/-10Vdc
Temperature range	0 / 50 degree C
Output burden	<500 Ohm current out, 10kOhm voltage
Aux Power Supply	18-36V DC
Isolation from input	3kV
Isolation from Power Supply	2kV
Accuracy	<1%
Mass	~0.5kg

Fixed core 4x HECS20A (left), HECS100SC (right 24mm ID):



NB SPECIFICATIONS CAN CHANGE WITHOUT PRIOR NOTICE



SURE Engineering CC
 PO Box 63, Steenberg, Cape Town 7947
 South Africa
 Reg CK 87/11172/23

Website: <http://www.suretech.co.za>
 email: info@suretech.co.za
 Tel: +27-21-701-8529 Fax: +27-21-701-9183
 Cell: +27-83-555-0149